

Sportec Laminate Locker Range

Davian
Systems Ltd

Easy To Clean, Sturdy And Pristine



Lockers and accessories for all your personal storage needs

Demanding Public Environments

Leisure and public space furniture has to withstand a great deal of day-to-day public wear and tear. Our lockers and leisure furniture are designed for use in the most demanding environments. Ideal for both dry and general purpose areas, or wet and humid conditions.

We can provide lockers that are suitable for:

Schools and Colleges
Gyms and Leisure Centres
Staff and Personnel Lockers
Changing Room Facilities
Disabled areas



Construction

All Sportec lockers are constructed using aluminium corner and shelf profiles, which can be supplied with a choice of either an anodised or epoxy powder coat finish. The quality and robustness of the lockers are reinforced by the entire carcass being made from Trespa solid grade laminate. The locker carcass is constructed from 6mm thick panels, whilst the doors and shelves are 10mm thick.

The fully assembled lockers can be installed directly onto floors that are already perfectly flat. Alternatively the lockers can be mounted on custom support frames, which come complete with adjustable feet. The frames are of a welded construction, from mild steel or stainless steel tube, which is then epoxy powder coated to compliment individual colour schemes.

The support frames can also incorporate a slatted seat at the front of the locker. Seating slats can be manufactured in 13mm thick Trespa solid grade laminate with a choice of colours and decors available from the Trespa Athlon or Trespa Virtuon range. Alternatively seating slats can be manufactured from timber such as solid Oak Ash or Mahogany and pre-fitted to the seating frames.

All lockers are supplied fully assembled for quick and easy installation.

Locking Systems

A range of different locking systems is available as follows:

- **Re-programmable cam locks using a control key, which re-programme door locks to accept new keys and avoids the necessity to replace the entire door lock.**
- **£1 coin return or keep locks, steel bodied or plastic bodied with removable barrels.**
- **Standard cam locks with a master key option.**
- **Stainless steel hasp and staple for padlocks.**



Trespa Athlon and Trespa Virtuon Solid Grade Panels

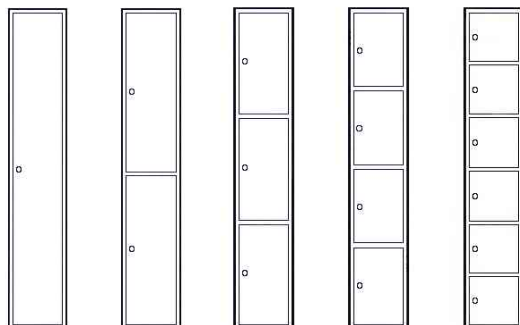
These panels all have key qualities needed for a wide range of demanding environments. Both product ranges are ideal and recommended for public areas, which are subject to a high level of use.

Trespa Panels Are:

- **Easy to Clean:** The non-porous and closed surface structure makes it difficult for dirt to cling to the surface.
- **Hygienic:** The non-porous and closed surface structure does not support the growth of bacteria and mould.
- **Visually Attractive:** Even after intensive cleaning the panels will remain visually attractive.
- **Moisture Resistant:** The edges and decorative surfaces are moisture resistant.
- **Scratch and Wear Resistant:** Highly resistant to daily wear and tear.
- **Quality Assurance:** The panels have a 10 year manufacturers guarantee, providing they are fixed and used in accordance with their recommendations.

S
P
O
R
T
E
C

Standard Door Configurations



Standard Sizes

1800H x 300W x 300D
 1800H x 300W x 450D
 1800H x 300W x 500D
 1800H x 400W x 450D
 1800H x 400W x 500D
 1800H x 450W x 450D
 1800H x 450W x 500D

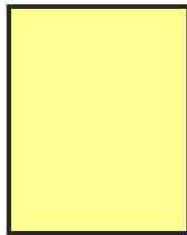
Non-standard sizes also available on request, for fitting in restricted spaces.

Trespa Athlon UK Stock colours, other colours and patterns available on request

Stock levels do change periodically, so please check confirmation on every order



White
E0-00



Melon Yellow
E2-31



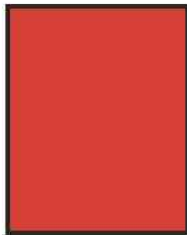
Sand
E3-01



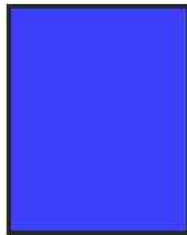
Powder Blue
E17-32



Aquamarine
E20-12



Poppy Red
E7-62



Brilliant Blue
E17-33



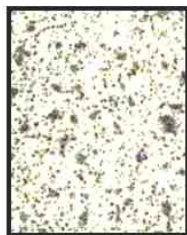
Gold Yellow
E3-42



Carmine Red
E7-52



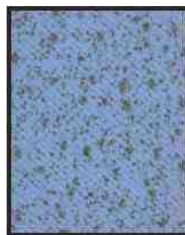
Aqua Blue
E17-52



Speckled
White
S0-00



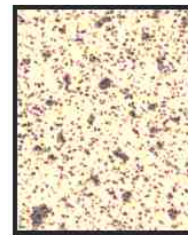
Speckled
Silver Grey
S0-02



Speckled
Powder Blue
S17-32



Speckled
Aquamarine
S20-12



Speckled
Sand
S3-01



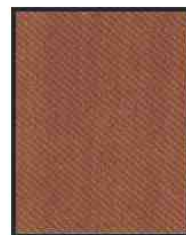
Beech
W73-01



Oak
W74-01



Wild Cherry
W78-01



Pear
W85-02



European
Wild Apple
W88-02

Please note the colours and patterns are printed, and may vary from the true Trespa colour. Samples available on request

Davian Systems Ltd

Head Office: Tel 01952 507 377 - Stafford Office: 01785 227010 - Scottish Office: 01382 477663

Email: info@daviansystemsltd.co.uk Web Site: www.daviansystemsltd.co.uk

Company registered in England & Wales No. 5414009
VAT No. 857 9943 51